



Southern Synthetic Pitch

Important Notes for Users

Lettings at the Southern Pitch are mostly covered by Manx Sport & Recreation Leisure Attendants who are likely to be in and around the pitch (or the cabin at the entrance to the pitch) should you need them. If they are not visible when you need them please use one of the contact numbers overleaf if you require support during your session.

Player Safety

The staff member opening up the pitch will complete a visual check of the facility, including any damage to the playing surface, check of goals etc. If your session is following another hirer, it is important for coaches to do their own checks in case there have been any damage caused by the previous hirer. If a hazard is identified that cannot be removed or minimised please contact the staff member on site for support.

The NSC Outdoor Team have a risk assessment for the synthetic pitch in place; however all hirers should have their own Risk Assessment in place for the *activity* they are using the pitch for.

Duty of Care

The hirer has a duty of care for the safety of the participants and spectators attending their session. They must ensure that they have checked that the facility is safety and suitable for the activity they have hired it for.

Footwear

In order to prevent damage to the playing surface, and injury to pitch users, it is important that anyone on the playing surface is wearing either astro turf boots or trainers with a good grip. **Football boots with blades or rubber/metal studs are strictly prohibited.**

Spectators

For the safety of all concerned, MSR strongly recommends to hirers that spectators watch from outside of the perimeter fence. Hirers who wish to allow spectators inside must have a system in place to ensure spectator safety which should be documented in their risk assessment.

Mobile Communication

The hirer is asked to ensure that somebody within the group has access to a mobile phone in order to call Emergency Services should anybody during the session require assistance. It is also important to have a list of the contacts (overleaf) to call for assistance as required.

First Aid & Accident Reporting

Hirers using the Synthetic Pitch are responsible for ensuring that there is at least one adequately trained first aider present at their session with access to their own first aid supplies. Accidents requiring treatment must be documented on an Accident Form. Please find the site staff who will bring a form for you to complete. It is also important for the hirer to check the area where the accident occurred to ensure that there are no further hazards before resuming the activity.

Emergency Services Call Out

If you have to call upon the Emergency Services for assistance at any point during your booking, please also ensure the staff on site are informed (via the contact overleaf) so they can open up the bottom gate for vehicle access to the pitch should it be required.

Fault Reporting

The pitch and equipment are inspected regularly by NSC Staff and school staff however there may be damage caused between these times which staff have not been made aware of. If you come across any maintenance issues on the pitch please report them as soon as possible to NSCOutdoor@gov.im.

Pitch closure – adverse weather

During winter bookings there may be the occasional need to cancel a session on the pitch for safety reasons. An assessment of the pitch will be made when the member of staff arrives for their shift (15 minutes before the start of the booking). If a hirer wishes to cancel prior to this time, please liaise with the NSC Outdoor Team on 688593.

Some examples of reasons for cancellation include:

- Severe Winds – causing goals to move
- Flooding on pitch during prolonged heavy rainfall
- Ice / Snow covering on pitch

Goals

The blue goals on the pitch are for use for **Hockey ONLY**. If these goals need to be moved this must be carried out by responsible adults who are familiar with the procedure for moving the goals (this requires a minimum of 4 adults). After the session they must move them back off the pitch for the next hirer. **Under no circumstances should young people be asked to carry out this task.**

To help preserve the lifespan of the equipment on the pitch, please ensure people do not:

- ✗ Sit in the backboard of the goals as this causes damage to the nets
- ✗ Swing on the crossbar of the goals
- ✗ Stand behind (or walk/run behind) the goals

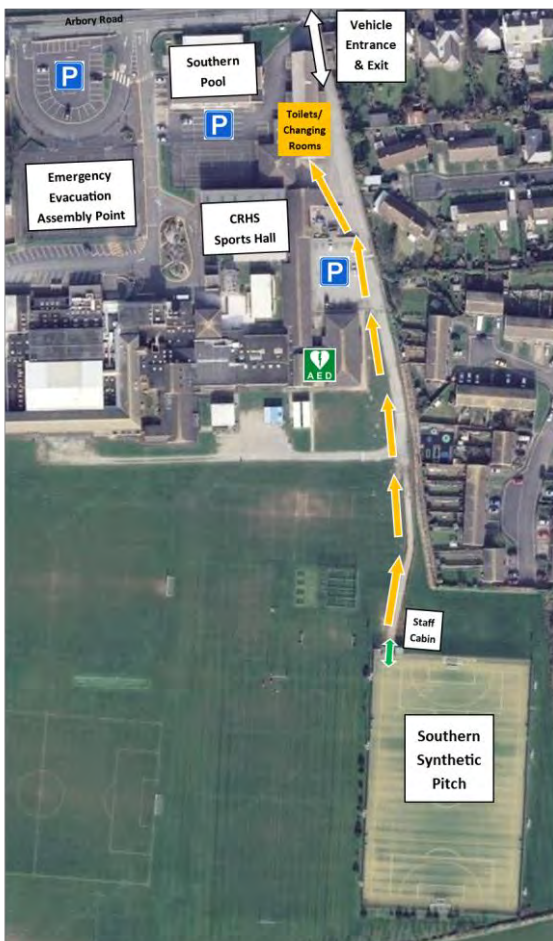
If using the unweighted hybrid hockey/football goals (playing across the half pitch):

- Ensure they are positioned correctly on the side line with the chains attached but not pulled tight so they become a trip hazard.
- Under no circumstances should the activity resume if these goals are being moved by high winds.
- Following their own dynamic risk assessment, coaches/officials may authorise play to continue in high winds providing that the 4 unweighted goals are dropped flat to the floor so they cannot tip.

Time management

Please be aware that all hirers must be off the pitch promptly at the end time of their booking. This includes collecting items from the side lines and vacating the pitch. If any hirers are still inside the pitch more than 5 minutes after the booking has finished, a late finish charge of £30.00 will be applied to their booking. It is important to liaise with the person who has booked your pitch to ensure you know the times of the booking.

Southern Synthetic Pitch Site Map



Site Map

Please familiarise yourself with the site map so you are aware of the layout of the site, the Emergency Evacuation Point and the location of the toilets / changing areas and de-fibrillator (AED)

Key Contact Numbers

Please use the following contact details for staff should you require any assistance during your session:

CRHS Leisure Attendant Phone

451129

NSC Outdoor Duty Phone

431809

NSC Outdoor Office

688593

NSC Indoor Duty Officer

688562

Please encourage coaches and/or session co-ordinators to programme the relevant contact numbers into their mobile phone should they require assistance at any point during their booking.